

## Partners

The following institutions are collaborating in LINKS-UP:



Innovation in Learning Institute (ILI), Friedrich-Alexander-Universität Erlangen-Nürnberg, Erlangen Germany  
[www.fim.uni-erlangen.de](http://www.fim.uni-erlangen.de)



Arcola Research LLP, London, United Kingdom  
[www.arcola-research.co.uk](http://www.arcola-research.co.uk)



eSociety Institute, The Hague University of Applied Sciences, The Hague, The Netherlands  
[www.esocietyinstituut.nl](http://www.esocietyinstituut.nl)



PIN, Servizi Didattici e Scientifici per l'Università di Firenze, Prato, Italy  
[www.pin.unifi.it](http://www.pin.unifi.it)



Salzburg Research Forschungsgesellschaft, Salzburg, Austria  
[www.salzburgresearch.at](http://www.salzburgresearch.at)



European Distance and E-Learning Network (EDEN), Milton Keynes, United Kingdom  
[www.eden-online.org](http://www.eden-online.org)

## Visit Links-up @ ...



School Forum 2009, the first Berlin Forum on Technology and Learning Trends for Schools, in conjunction with the 15th Online Educa Berlin

Wednesday, 02 December 2009, Berlin, Germany  
[www.online-educa.com/schoolforum/home.php](http://www.online-educa.com/schoolforum/home.php)  
[www.online-educa.com](http://www.online-educa.com)



Plymouth e-Learning Conference

5th Plymouth e-Learning Conference 2010 – Learning without Limits: Facing the Challenges

08 & 09 April 2010, Plymouth, United Kingdom  
[www2.plymouth.ac.uk/e-learning](http://www2.plymouth.ac.uk/e-learning)



European Distance and E-Learning Network (EDEN) Annual Conference 2010 – Media Inspirations for Learning – What makes the impact?

09 – 12 June 2010  
<http://www.eden-online.org/eden.php?menuId=485>

And many more events to come! Please check [www.links-up.eu](http://www.links-up.eu) for updates!

## Get in touch with Links-up ...

### Thomas Fischer

[thomas.fischer@fim.uni-erlangen.de](mailto:thomas.fischer@fim.uni-erlangen.de)  
Innovation in Learning Institute (ILI)  
Friedrich-Alexander-Universität Erlangen-Nürnberg,  
Nägelsbachstraße 25b, 91052 Erlangen, Germany  
Phone: 0049 9131 852 4735  
Fax: 0049 9131 852 4738  
[www.fim.uni-erlangen.de](http://www.fim.uni-erlangen.de)

### Joe Cullen

[jcullen@arcola-research.co.uk](mailto:jcullen@arcola-research.co.uk)  
Arcola Research LLP  
Alvington Crescent 6, E8 2NW London, United Kingdom  
Phone & Fax.: 0044 207 2543080  
[www.arcola-research.co.uk](http://www.arcola-research.co.uk)

[www.links-up.eu](http://www.links-up.eu)



Education and Culture DG  
Lifelong Learning Programme

This project has been funded with support from the European Commission. This publication reflects the views only of the author, and the Commission cannot be held responsible for any use which may be made of the information contained therein.

Photos: Fotolia.com © Coka, Franz Pfluegl, Jason Stitt, Miroslav, Mosquidoo, Yvonne Bogdanski



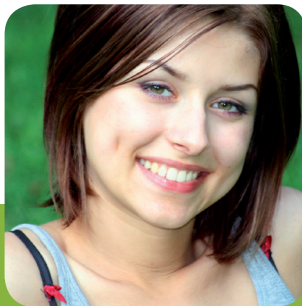
# Links-up.eu

Learning 2.0 for an Inclusive  
Knowledge Society —  
Understanding the Picture

[www.links-up.eu](http://www.links-up.eu)

## What is Links-up?

Links-up is a research project about how 'Web 2.0' technologies – such as social networking software – are changing the face of education and training for disadvantaged people. The project draws a picture of the 'landscape' of 'Learning 2.0 for Inclusion' by reviewing what has been done in the academic and research field, and what has been achieved by practitioners working on the ground in projects that have been using Web 2.0 to work with disadvantaged groups. It applies a series of 'action research' experiments, collaborating with 'host' projects working in the field, to evaluate the added contribution Web 2.0 can make to practices that use learning to support social inclusion.



[www.links-up.eu](http://www.links-up.eu)

## Background

The spread of social software in recent years has been phenomenal. In the education sector, much has been made about how social software and other 'Web 2.0' applications like weblogs, media-sharing software, interactive games and virtual worlds have the potential to open up more opportunities for better learning for more people. In particular, it is claimed that 'Learning 2.0' can make education more accessible, more fun and more valued for young people who have dropped out of school, and for older people who perhaps feel they have missed out on learning.

Beyond education, experts argue, Web 2.0 can make a big contribution to a more equal society. One of the main objectives of Links-up is to look at the evidence for these claims and to identify 'what works, for whom and under what conditions' in the use of 'Learning 2.0' to support social inclusion.



## Project Activities

The project activities are based on an 'action learning' approach. Links-up will build on the results of what has been done so far, through a review of the academic and research literature, and a 'mapping' of programmes and projects involved in 'Learning 2.0 for Inclusion'. It will then carry out 20 case studies of examples of 'Learning 2.0 for Inclusion' initiatives, highlighting success factors and barriers. The results of these initial research activities will feed into a web-based platform, which will contain and make available, via an on-line 'Innovation Laboratory' a range of resources for further research and action research.

These resources will then be used in the next phase of the project programme, which involves five 'action research experiments' with 'live' initiatives currently providing support to disadvantaged groups. A set of supporting evaluation and dissemination activities will enable external stakeholders and the public to join in the work of the project by sharing their own



experiences, commenting on the work of Links-up and taking part in online discussions. Supporting the online dissemination effort, we also aim to carry out a series of 'Learning Dialogues' in which project partners will join with 'action research' partners and other groups and individuals working in this field to review and share what is being done and what is being learned.

## Project Outcomes

The results of the 'early research phase' of the project, focusing on a review of state of the art in the field, will be available as published reports. Throughout the 'technology development phase' of the project, the online platform and 'Innovation Laboratory' will provide policy-makers, practitioners and researchers with a set of guidelines, good practice cases and Web 2.0 tools that can be used to support better policy and practice. 'Learning Dialogues' will disseminate the project results to stakeholders.



[www.links-up.eu](http://www.links-up.eu)